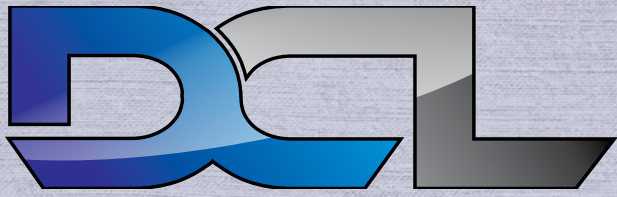




WA RALLY CHAMPIONSHIP

2025



EXPERTS CUP



Photos: BR Media

FURTHER REGULATIONS #1

Saturday
25th October 2025
Wellington Dam, Collie

Round 6
ARC Plant Hire
WA Rally Championship
www.rallywa.com



2025 DCL Construction Experts Cup WA RALLY CHAMPIONSHIP



ITINERARY

Saturday 25th October



TC SS	Location	SS Distance	Liaison Distance	Total Distance	Time Allowed	1st Car Due	
	<i>Distance to next refuel</i>						
		24.25	41.52	65.77			
TC0	Start					11:00	Section 1
TC1	Palmer Rd		13.84	13.84	0:25	11:25	
SS1	Palmer 1	7.73				11:28	
TC2	Kelly Road		11.22	18.95	0:25	11:53	
SS2	McClusky Short 1	16.52				11:56	
TC2A	Service A IN		16.46	32.98	0:30	12:26	
	Service A Collie	24.25	41.52	65.77	0:40		
TC2B	Service A Out / Regroup 1 In					13:06	Section 2
	Regroup 1				Max: 0:10		
TC2C	Regroup 1 OUT					13:16	
RZ 1	Refuel						
	<i>Distance to next refuel</i>						
		37.18	53.42	90.60			
TC3	Palmer Road		13.84	13.84	0:30	13:46	
SS3	Palmer 2	7.73				13:49	
TC4	Wights Road		22.07	29.80	0:35	14:24	
SS4	Wellington South 1	29.45				14:27	
TC4A	Service B IN		17.51	46.96	0:45	15:12	
End of CLUBMAN Rally						Clubman only	E
	Service B Collie	37.18	53.42	90.60	0:40		
TC4B	Service B Out / Regroup 2 In					15:52	
	Regroup 2				Max: 0:10		
TC4C	Regroup 2 OUT					16:02	
RZ 2	Refuel						
	<i>Distance to next refuel</i>						
		45.97	46.67	92.64			
TC5	Kelly Road		16.25	16.25	0:30	16:32	Section 3
SS5	McClusky Short 2	16.52				16:35	
TC6	Wights Road		12.91	29.43	0:30	17:05	
SS6	Wellington South 2 (Power)	29.45				17:08	
TC6A	Finish In		17.51	46.96	0:45	17:53	
	FINISH (PARC FERME)	45.97	46.67	92.64			

Total Clubman	61.43	94.94	156.37
Total WARC	107.40	141.61	249.01

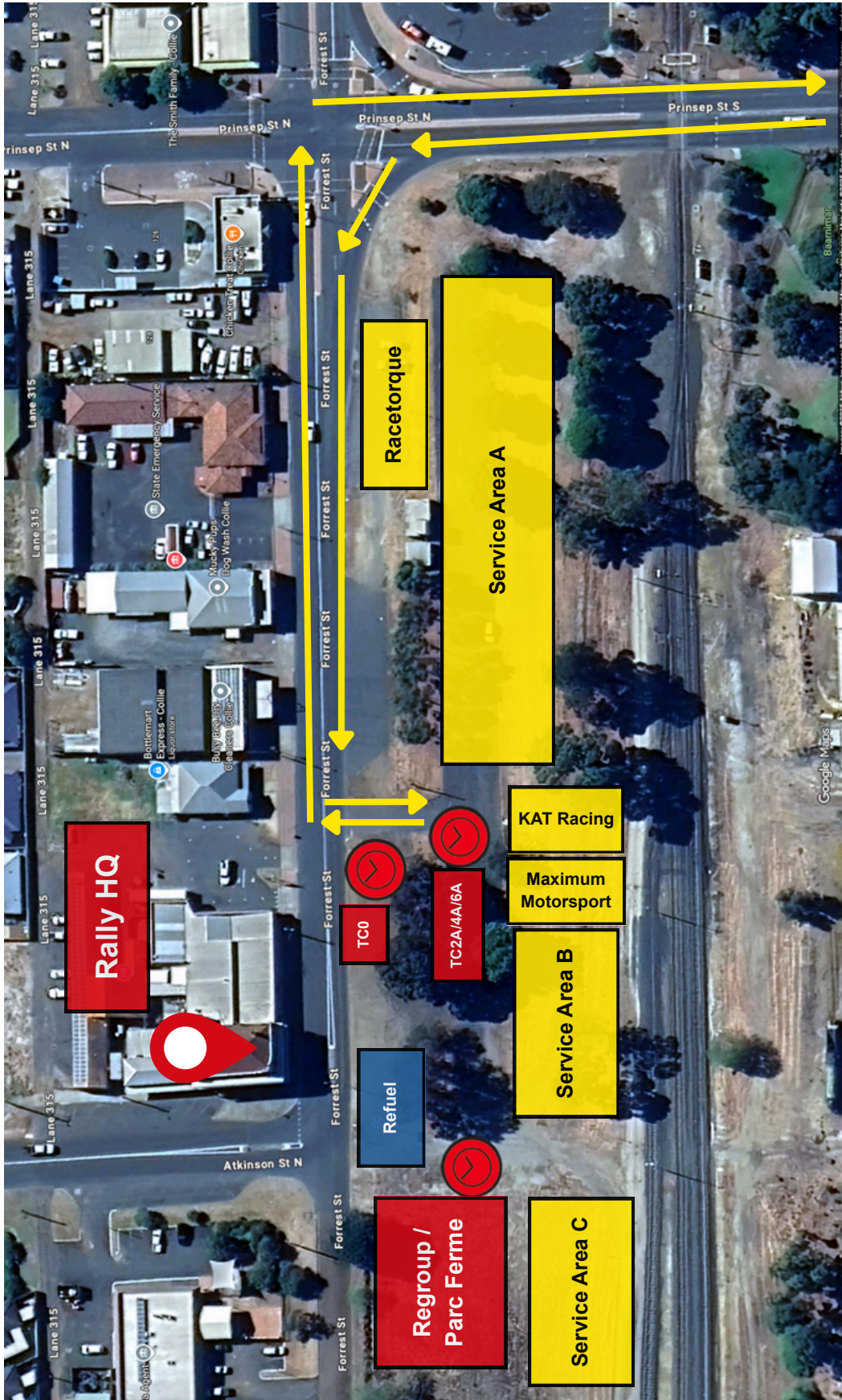
Sunset 18:36
Last Light 19:03

E	Early Check in Permitted (refer Supp Regs)
RZ	Refuel Zone



Updated:

Date / Time
15-Oct-25 13:13





SS 4/6 Wellington South

